

V1- 2025

# W A B i

SIMPLER. SMARTER. STRONGER

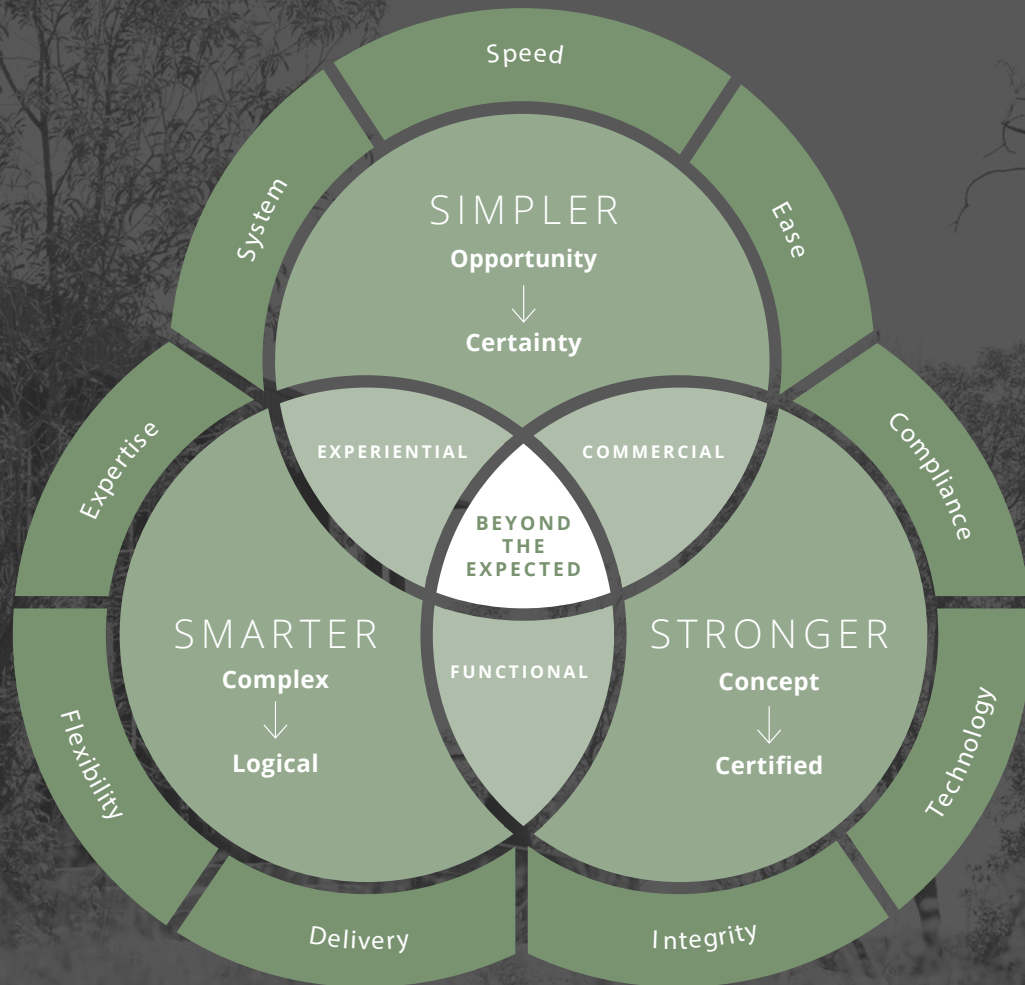
**Australian Owned**

120 Day Fast Delivery

Up to x3 Faster than traditional construction

**PRIMARY**  
**BROCHURE**

[wabisystems.com.au](http://wabisystems.com.au)



WABi Systems is a smarter way. Our foundations are in empowering people with a simpler, smarter, stronger approach to build in any environment using modern methods of construction.

Founded more than 30 years ago in the remote coastal town of Broome, Western Australia, WABi Constructions was established by Karl Plunkett to create affordable, rapid, and environmentally conscious building solutions for harsh environments.

Over the years, WABi has evolved and expanded globally, delivering innovative construction projects across residential, commercial, and tourism sectors in more than 20 countries.

We collaborate closely with clients – we consider our partners, to provide tailored, cost-effective solutions.

WABi Systems can be assembled according to the unique needs of any project:

1. **ON-SITE:** Built with prefabricated panelised parts
2. **OFF-SITE:** Built off-site and delivered as completed modules
3. **STACKABLE SYSTEMS:** Partially built off-site. Delivered and craned into place for volumetric construction

At WABi we are proud of, and passionate about, what we do.

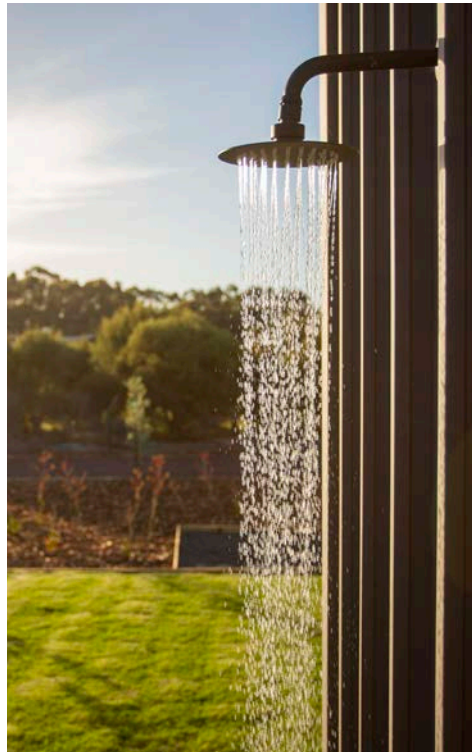


# TOURISM- ZAMBEZI LODGE

## Location: Margaret River, WA

Sitting in the heart of the Margaret River wine region the Zambezi Lodge reflects excellence in sustainability and smart build principles. The lodge was originally designed as an Eco Tent and later upgraded to the WABi Tourism System prototype for a project on the Zambezi River in Africa, reflecting safari-style spacious living. Perched above a private rocky outcrop, with its own 'watering hole' lake and sweeping sunset views, Zambezi Lodge captures the essence of the south-west, in an inspired safari-style setting.

We always like to challenge and prove our new design concepts, before sharing them with the world – and hope you enjoy the new adventure of Zambezi Lodge and our adjacent WABi Tourism System, next door.



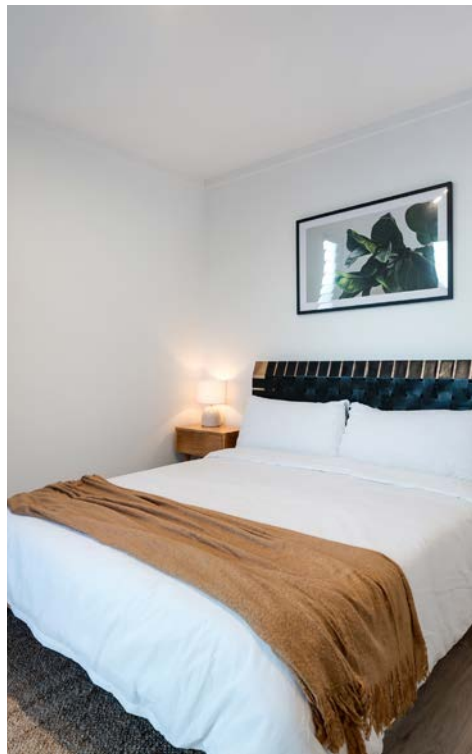
# WORKERS ACCOMMODATION- DISPLAY

## Location: Fremantle, WA

As the world has begun to reach post-pandemic normality, the rental market has soared. We found ourselves in the land of staff accommodation. So we set ourselves a little project, to design comfortable and affordable staff accommodation.

From Line Staff to Executive managers, we developed a large variety of floor plans for different levels of staff. This project was built in our yard in Western Australia in only 15 working days, approximately 300 hours.

The revolutionary future of remote and regional businesses to reduce staff turnover by providing creature comforts to your staff.





# TOURISM- WANDER CABINS

## Location: QLD

Providing short-stay accommodation in some of Australia's most spectacular locations, Wander has a variety of retreats with a focus on eco-living. In one of their latest projects, they collaborated with our team on some luxurious module designs. Each WABi Tourism System had luxury in mind, with floor-to-ceiling windows to allow the guests to truly immerse themselves in nature.



# WABi GROUP

The WABi Group of companies is headquartered in Fremantle, Western Australia, and spans the entire building process, from design, manufacturing and construction.

By using our affiliated companies, it allows us to streamline supply and delivery, exercising tight quality control on all projects.

## W A B i

SIMPLER. SMARTER. STRONGER

A high quality, rapid and eco friendly patented building system designed for the tourism, workers accommodation and housing industries.

## W A B i

DESIGN

A design and architectural service, offering design exploration, master planning, building approvals, render packages and interior services.



### ECO STRUCTURES

A global provider of experiential tourism accommodation, Glamping Tents.

## W A B i

CONSTRUCTIONS

A construction company for over 30 years. Specialising in resorts, residential, government housing and commercial buildings.

## W A B i

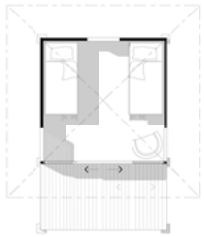
WINDOWS

A residential and commercial window manufacturer. Specialising in Vantage by AWC Window Systems.

# Wabi Cabin (C)

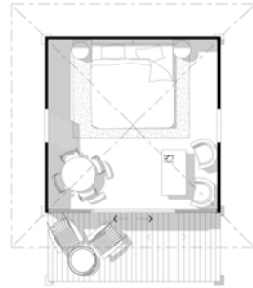
**C12**

3.4m x 3.4m = 12m<sup>2</sup>



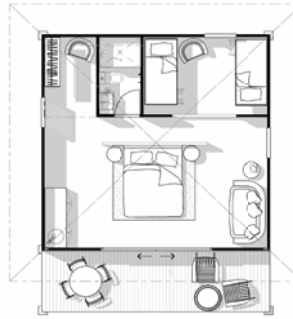
**C22**

4.6m x 4.6m = 22m<sup>2</sup>



**CK42**

6.4m x 6.4m = 42m<sup>2</sup>



**CK69**

8.2m x 8.2m = 69m<sup>2</sup>



# WABi Module (M)

**MP22**

3.4m x 6.3m = 22m<sup>2</sup>



**MP35**

3.4m x 9.9m = 35m<sup>2</sup>



**MP45**

3.4m x 13.5m = 45m<sup>2</sup>



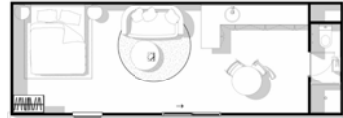
**MK22**

3.4m x 6.3m = 22m<sup>2</sup>



**MK35**

3.4m x 9.9m = 35m<sup>2</sup>



**MK45**

3.4m x 13.5m = 45m<sup>2</sup>



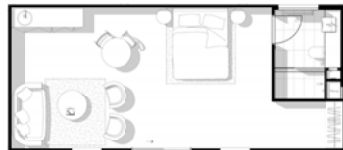
**MP 28**

4.3m x 6.3m = 28m<sup>2</sup>



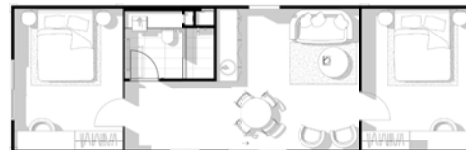
**MP 44**

4.3m x 9.9m = 44m<sup>2</sup>



**MP 57**

4.3m x 13.5m = 57m<sup>2</sup>



**MK28**

4.3m x 6.3m = 28m<sup>2</sup>



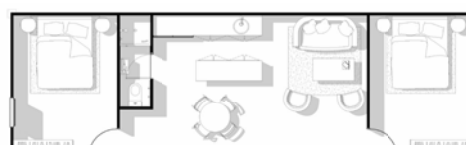
**MK44**

4.3m x 9.9m = 44m<sup>2</sup>



**MK57**

4.3m x 13.5m = 57m<sup>2</sup>



**Key**

C - Cabins

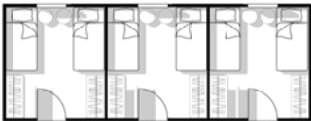
M - Module

P - Bathroom Pod (MOQ 5)

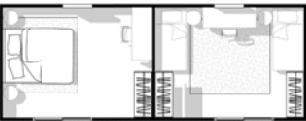
K - Bathroom Kit

# WABi Workers Accommodation (MS)

**MS3-33**  
3.4m x 9.1m



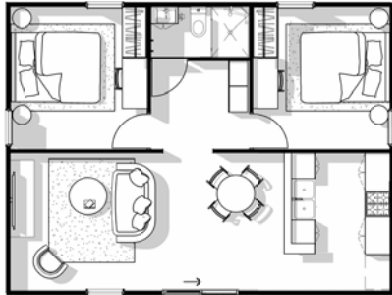
**MS2-33**  
3.4m x 9.1m



**M-33**  
3.4m x 9.1m



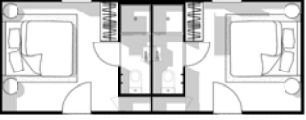
**MK60**  
6.6m x 9.1m



**MK2-33**  
3.4m x 9.1m



**MK2-16**  
3.4m x 9.1m



**MK-33**  
3.4m x 9.1m



**MK45**  
3.4m x 13.5m



**MK2 - 45**  
3.4m x 13.5m

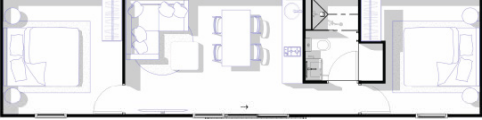


# WABi Houses (GF)

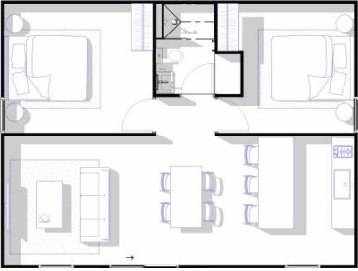
**GF-30**  
3.4m x 9.1m



**GF-45**  
3.4m x 13.6m



**GF-58**  
6.9m x 9.1m



**GF-70**  
6.9m x 12.8m



**Key**  
C - Cabins  
M - Module  
P - Bathroom Pod (MOQ 5)  
K - Bathroom Kit



# KEY IMPACT AREAS

Affordable price point



Promoting skills growth through local labour



Quality assurance

Biodiversity protection



Waste minimisation

Minimal environmental impact



Sustainable design

# THE WABi DIFFERENCE

We ensure that our clients and stakeholders enjoy the benefits of a much quicker end-to-end construction process, together with significantly increased opportunities for enhanced community consultation, involvement and social return.

WABi Construction
  Traditional Construction



*\*Based on WABi MK-60 delivered to Kimberly region vs yourhome.gov.au example*

A modern building with vertical corrugated metal siding and a glass-enclosed porch with two white chairs. The building is set in a natural environment with trees and grass. The image is in grayscale with a dark overlay.

# TOTAL INTEGRATION

Modern methods of construction



# SUM OF PARTS

## Flat pack permanent construction

Using prefabricated components that are manufactured and transported separately and **built together on site;** using our customised installation assembly drawings.



C BRACKET\*



L BRACKET\*



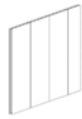
JOIST BRACKET\*



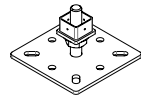
ECO ANCHOR BRACKET\*



ECO ANCHOR\*



WABi PANEL\*



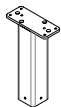
BASE PLATE\*



C & Z PURLINS



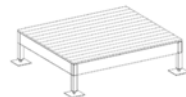
BATHPOD/  
BATHKIT



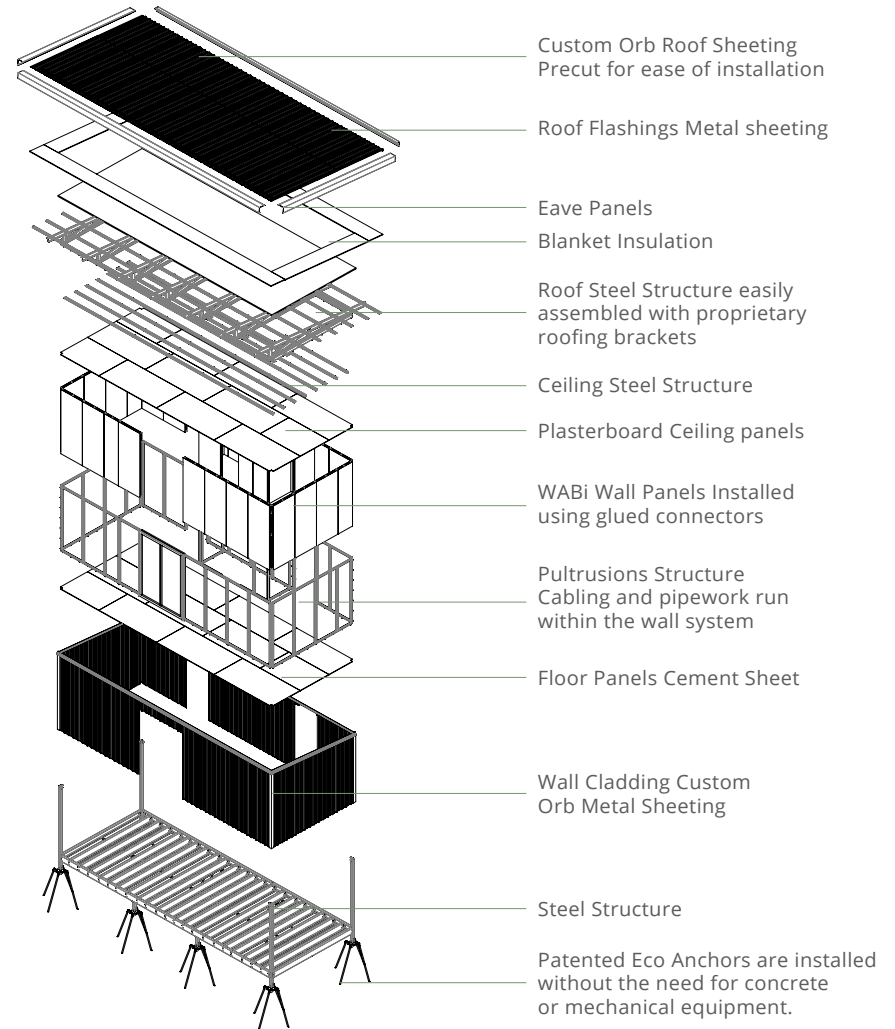
STUMP



DOORS &  
WINDOWS



1.8m or 2.7m  
DECK



\*Patented System

\*\*Example project not specific to project.

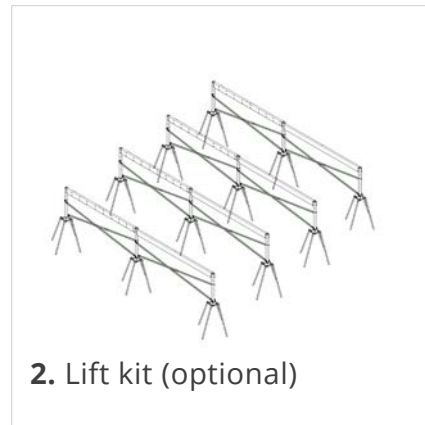
# BUILD SEQUENCE

Uniting every component for the world's fastest modular home

Click to view  
Build Sequence



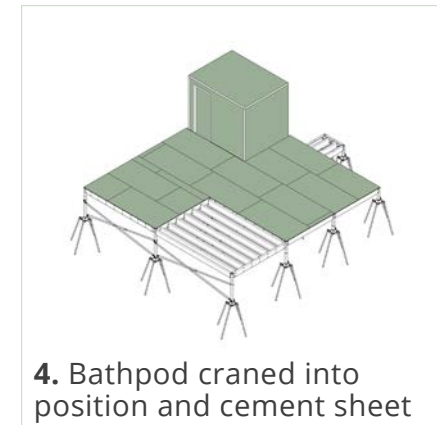
**1.** Eco Anchors- Concrete free footings



**2.** Lift kit (optional)



**3.** Structural steel flooring



**4.** Bathpod craned into position and cement sheet



**5.** PIR WABi Panel + glass windows + doors



**6.** Structural steel roof



**7.** Extra insulation & external cladding



**8.** Internal fit out, decking and add-ons

# INCLUSIONS

\*Subject to site specific engineering and BAL/Wind requirements.

A standard WABi Kit includes all the materials required to build the shell of a home. All structural elements, walls, roofing, external cladding, deck, doors and glazing. It does not include labour.

## UPGRADES:

**Cyclonic Upgrade-** Quote

**Marine Upgrade-** Quote

**BAL Upgrade-** Quote

**Snow Upgrade-** Quote

## FOUNDATIONS:

**Eco Anchor-** WABi's recommended footing option, to reduce the cost of traditional footings. Not included in the kit price, until a sales agent has confirmed they are suitable for your site.

**Concrete Slab-** Not included in the price, would require a quote from a local contractor. We recommend using Eco Anchors where rock isn't present.

## EXCLUSIONS:

Labour, Electrical Components, Plumbing Components, Paint, Internal Wall Feature Cladding, Kitchens, Bathrooms and Wardrobes (unless added in orders +5) as well as any additional items not listed in the "Inclusions".

## SPECIFICATIONS TO CHOOSE:

- Roof Cladding Type & Colour- COLORBOND® Trimdek
- Wall Cladding Type & Colour- COLORBOND® Trimdek
- Composite Deck Colour
- Glazing Colour
- *Optional Vinyl Colour*

## EXTERIOR- ROOF

### Standard

- Structural steel frame
- Skillion 5 degree pitch w/ Exposed eaves
- COLORBOND® Trimdek roof cladding
  - with flashing as required
- Roofing blanket

## INTERIOR- WALLS

### Standard

- 2400H WABi wall panels (*client to batten, flush, paint or internally clad*)
- 10mm plasterboard ceiling (*client to batten, flush or paint*)
- Ceiling insulation
- Square timber cornice mold
- Square timber skirting mold
- CFC Cement Sheet Flooring

### Add Ons

- Luxury Vinyl Plank Flooring
- Bespoke Internal Wall Cladding

## COMPOSITE DECKING

### Add Ons

- Composite Decking
- Structural Steel Frame
- Balustrade

## EXTERIOR- WALLS

### Standard

- Structural steel frame
- 2400H WABi wall panels
- COLORBOND® Trimdek wall cladding

## GLAZING

### Standard

- Powder Coated Aluminum
- Fly Screen
- Standard Handles
- Key Lock

### Add Ons

- Double Glazing
- Low E Glazing
- Security Mesh
- BAL Upgrade Screens

## BATHKIT

- Vinyl flooring
- Full height cladded shower walls
- Shower base
- Fixed Shower glass
- Wall faced toilet
- 750 Wide Free standing Vanity with Open Shelf and 2 Soft Close Drawers
- Chrome, matte or brushed nickel tapware and shower system
- Hanging round wall mirror
- Chrome, matte or brushed nickel double towel rail and toilet roll holder



# WABI ECO ANCHOR

## Concrete free foundation

The Eco Anchor allows our units to be installed with ease in remote, undulating environments, without the use of concrete. It works by driving the four drive rods into the ground using a pneumatic hammer. The Eco Anchor system has the following advantages:

### EASE OF INSTALLATION

Quick installation. No requirement for excavation plant or concrete materials.

### GROUND SUITABILITY

The Eco Anchor system can be installed in a range of ground conditions without ground leveling. Horizontal and vertical adjustment ensures buildings are installed level.

### ENVIRONMENTALLY FRIENDLY

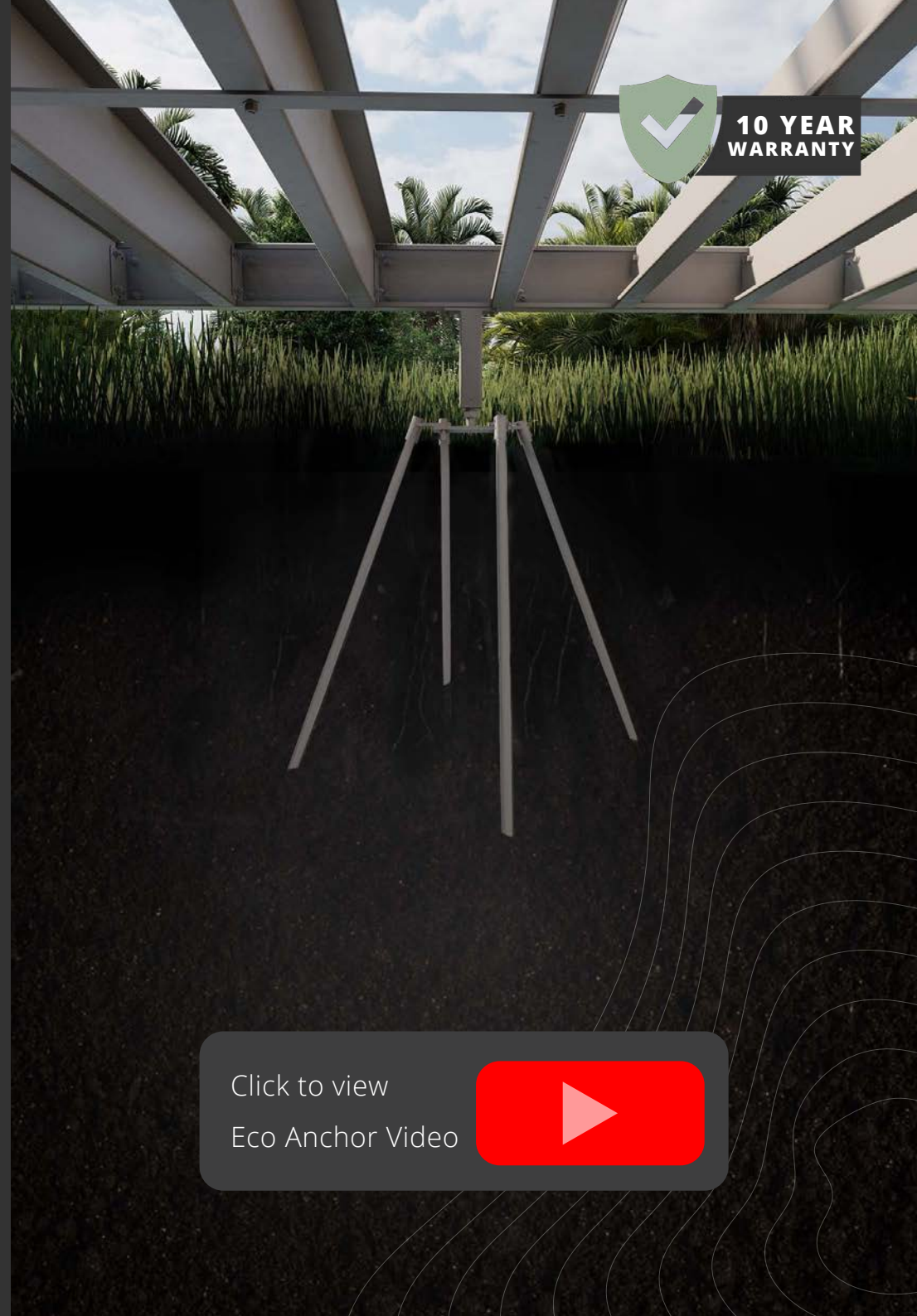
Minimal impact to the ground surface combined with a relatively small footprint makes this an environmentally friendly foundation system.

### COST EFFECTIVE

Eco anchors can be installed at a fraction of the cost of conventional footings.



**10 YEAR  
WARRANTY**



Click to view

Eco Anchor Video





# WABi PANEL

## Insulated PIR wall panel



### **THERMAL EFFICIENCY**

Insulation rating R3.543.

### **STRUCTURAL INTEGRITY**

Panels are fully bonded for the highest cyclone rating in the world (Cyclonic Region D).

### **ELECTRICAL & PLUMBING**

Cabling and pipework runs between the panels, alleviating the need for complex and messy chasing or the installation of conduits.

### **SAFE**

- Require less maintenance
- Minimise additional insulation costs
- Fire resistance
- Hypoallergenic
- Moisture resistant

### **EASE OF ASSEMBLY**

Panels can be easily lifted into position by a small team. Joints are glued, with no requirements for mechanical fixings.

### **INTERNAL & EXTERNAL FINISHES**

Suitable for any finish, internal and external, including the fixing of alternative sheeting such as Colorbond or Hardiplank.

### **COST EFFECTIVE**

An investment saving clients on additional thermal insulation and heating and cooling expenses.

### **INDUSTRY LEADING**

This single product is a significant advancement and innovation in the building construction industry.





# GALVANISED STEEL

Streamlining assembly with computer controlled engineering

## DURABILITY

All the steel components used are fully hot dip galvanised, giving our structures an unbeatable durability. Purlins are coated to Z350 and upgraded to Z450 in marine locations.

## SUM OF PARTS

Our patented parts are transported separately and stitched together on site; using our customised installation assembly drawings.

## MINIMAL WASTE

There's no waste because all components are cut to length with computer controlled engineering and all fixings provided in the kit.

## STRUCTURAL INTEGRITY

All of our products are manufactured to comply with the Building Code of Australia (BCA) standards and engineered to be capable of meeting the maximum cyclonic wind rating of Australia for any structure (Region D), and BAL 40 Flame Zone. This makes them the strongest structural system components currently available on the market.

## WARRANTY

- Structural hot dipped galvanised steelworks: 10-year limited warranty, with an estimated life of at least 25 to 50 years
- Floor joist and bearers: Blue Scope Lysaght 200C: 10-year limited warranty with an estimated life of 20 years.



# LIFT & BRACE KITS

WABi telescopic lift kits are available in 1m, 2m and 3m



The WABi lift and brace kits are designed to provide strong, safe and levels bracing for the WABi structures, independent of the site profile. With the help of these kits, the WABi system allows the client to customise their living experience — taking in previously unattainable views and expanding on their living space, regardless of the landscape limitations to conventional construction.

## SIZES

Our telescopic braces are available in three standard length of 1m, 2m and 3m, which are further adapted and cut to the exact size required to fit the ground profile and to provide the desired elevation.

## PROTECTION

Lift and brace kits are popular for those living in a flood zone. It protects the home from severe weather conditions, natural disasters and improper drainage.

## EXPANSION

Raising the unit is an excellent way to create more space and provide an area to stay cool during the hot summer months.





# BATHPODS

Bath Pods are prefabricated with impeccable detail throughout, from tiled floors, full height tiled walls and in a light, mid or dark tone colour variation. We provide 3 floor plans, our P1, P2- UAT & P4.



## EASY INSTALL + MAINTENANCE

Bath Pods are installed with a service duct allowing for easy maintenance.



## COST EFFECTIVE FIXED PRICE

A fixed price on every bathpod and finishes so there will be no surprises.



## LESS WORK ON SITE

The project manager is able to deal with only one contractor instead of the traditional 10+ suppliers and sub contractors.



## TIME SAVING

Using pods reduces the overall build program of the project and allows for fast installation on site.



## WORLDWIDE SHIPPING

Using pods reduces the overall build program of the project and allows for fast installation on site.



# TYPICAL PROCESS

To help realise the vision of the project, we have created a timeline to guide you through the process. The following table is indicative and time variations may occur outside of WABi Systems control.

<b>1</b>	<b>Identify Full Project Scope</b> You are here! From this document chose a plan and get in touch with our sales team!	<b>6</b>	<b>120 days in Manufacturing</b> 40% Progress Payment
<b>2</b>	<b>Initial Quote Developed &amp; Supplied</b> To ensure you have a good understanding of the process, inclusions, time frame & budget	<b>7</b>	<b>4-6 Weeks Shipping to Site</b> Manufacturing Completed 40% Progress Payment *Dependant on location
<b>3</b>	<b>Planning &amp; Building Approvals</b> Engage an architect or use our internal architects	<b>8</b>	<b>Pre Construction Meeting</b> Our internal team will meet with you and your preferred builder to have a preconstruction handover meeting
<b>4</b>	<b>Formal Quote Developed &amp; Supplied</b> Sign the manufacturing supply contract Engage a local builder	<b>9</b>	<b>Arrival to Nearest Port</b> Final 10% Payment Your project is almost at your site! Payment due when goods arrive at nearest port to site.
<b>5</b>	<b>Specifications &amp; Drawings Signed</b> 10% Deposit to Start	<b>10</b>	<b>Materials Land on Site</b> Provided you have all the correct approvals you are now ready to build!



# W A B i

SIMPLER. SMARTER. STRONGER

[wabisystems.com.au](http://wabisystems.com.au)

24 Marine Terrace Fremantle WA  
Australia  
+61 8 9193 8007

[sales@wabisystems.com.au](mailto:sales@wabisystems.com.au)

A company of The WABi Group

