

V1- 2025

W A B i

SIMPLER. SMARTER. STRONGER

Australian Owned

120 Day Rapid Delivery

Up to x3 Faster than traditional construction

MODULAR HOUSING
BROCHURE

wabisystems.com.au

WABi SYSTEMS

A superior quality, rapid and eco-friendly patented building system

WABi Systems is a renowned building system designed to provide cost-effective solutions for various building needs. The system has been developed over three decades, with extensive knowledge and experience building in remote and regional areas of Australia.

It offers a simpler, smarter, and stronger way of building using modern methods of construction. Each unit is designed around the 600mm and 900mm wall panel, allowing for flexibility and customisation to meet any design brief.

To complement the WABi system, a pre-finished bathpod is available that can be shipped with the WABi structure and easily integrated into the module.

WABi Systems is highly versatile, with additional options for decks, awnings, windows, and sliding doors, allowing for endless design possibilities.

A straightforward system that can be used to design and construct any building, anywhere in the world.





1 BED - 30

GF30 - 1 Bed

*Subject to site specific engineering and BAL/Wind requirements.

OVERALL WIDTH:	3.4m
OVERALL LENGTH:	9.1m
WALL HEIGHT:	2.4m
OVERALL HEIGHT:	3.2m
FLOOR SIZE:	33m ²

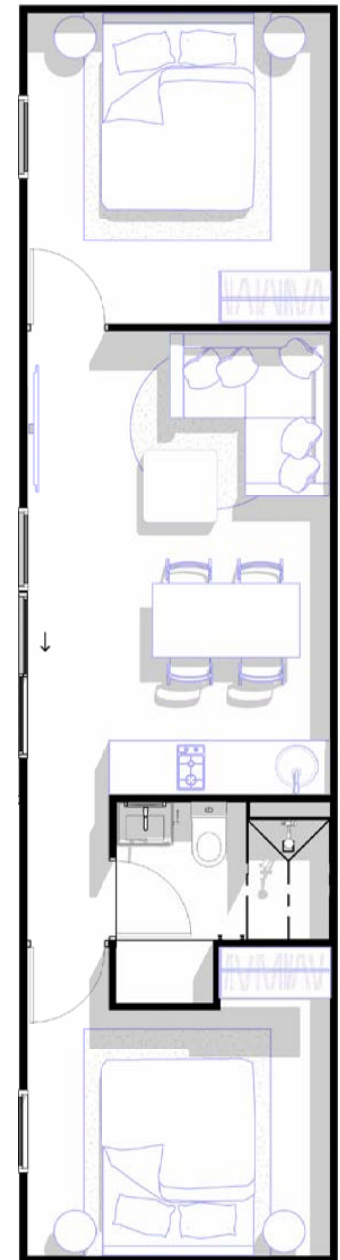


2 BED - 45

GF45 - 2 Bed

*Subject to site specific engineering and BAL/Wind requirements.

OVERALL WIDTH:	3.4m
OVERALL LENGTH:	13.6m
WALL HEIGHT:	2.4m
OVERALL HEIGHT:	3.2m
FLOOR SIZE:	45m ²





2 BED - 58

GF58 - 2 Bed

*Subject to site specific engineering and BAL/Wind requirements.

OVERALL WIDTH:	6.9m
OVERALL LENGTH:	9.1m
WALL HEIGHT:	2.4m
OVERALL HEIGHT:	3.5m
FLOOR SIZE:	58m ²

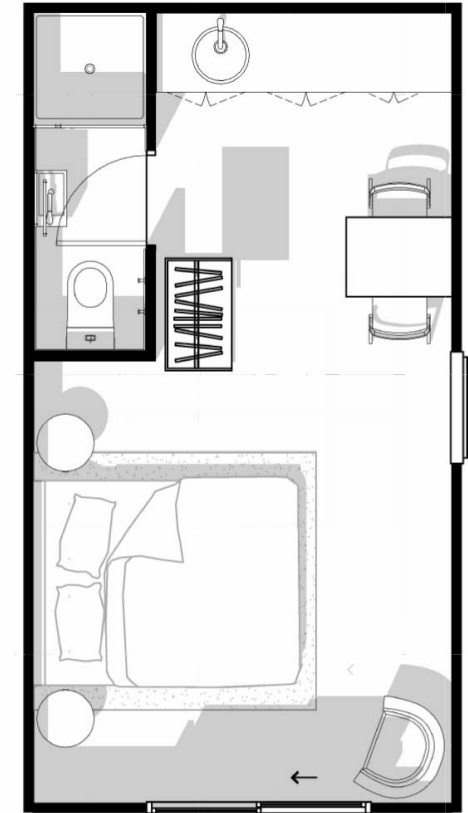


3 BED - 70

GF70 -3 Bed

OVERALL WIDTH:	6.9m
OVERALL LENGTH:	12.8m
WALL HEIGHT:	2.4m
OVERALL HEIGHT:	3.5m
FLOOR SIZE:	70m ²

*Subject to site specific engineering and BAL/Wind requirements.
*Deck included



MODULE 1 BED

MK22 -1 Bed

*Subject to site specific engineering and BAL/Wind requirements.

OVERALL WIDTH:	3.4m
OVERALL LENGTH:	6.4m
WALL HEIGHT:	2.4m
OVERALL HEIGHT:	3.5m
FLOOR SIZE:	22m ²

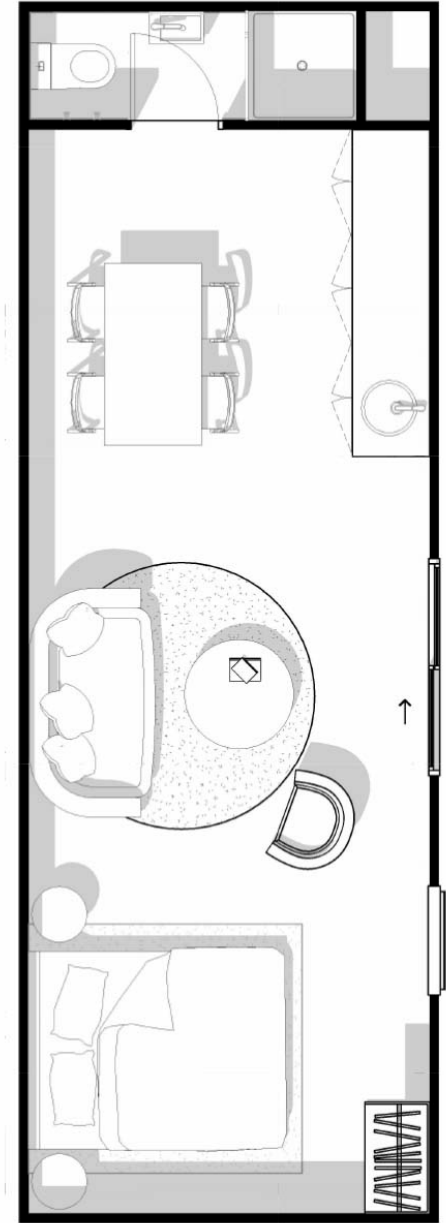


MODULE 1 BED

MK35 -1 Bed

*Subject to site specific engineering and BAL/Wind requirements.

OVERALL WIDTH:	3.4m
OVERALL LENGTH:	10m
WALL HEIGHT:	2.4m
OVERALL HEIGHT:	3.5m
FLOOR SIZE:	35m ²



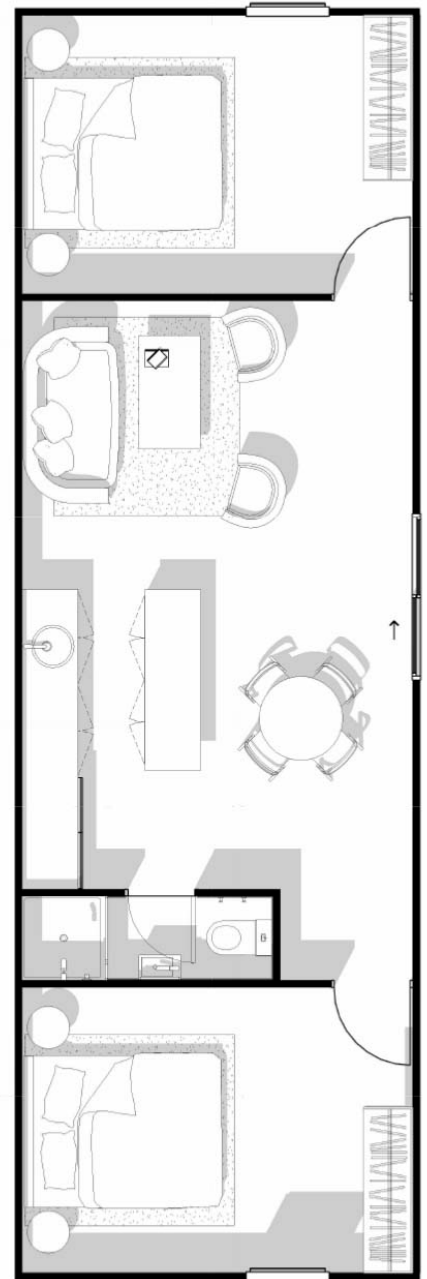


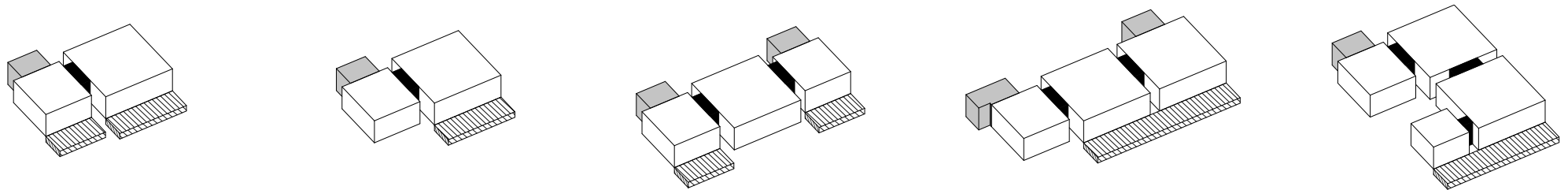
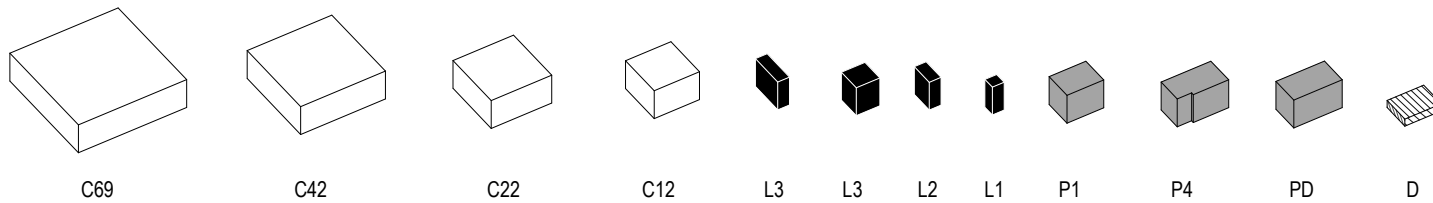
MODULE 2 BED

MK57 -1 Bed

*Subject to site specific engineering and BAL/Wind requirements.

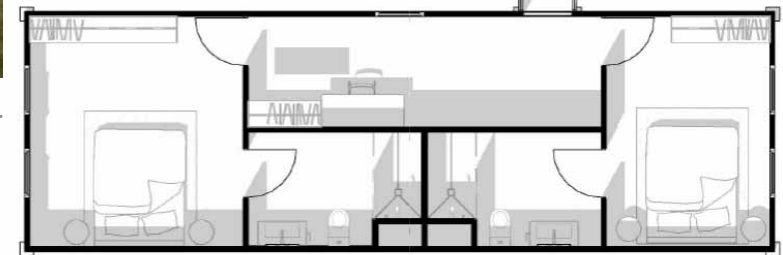
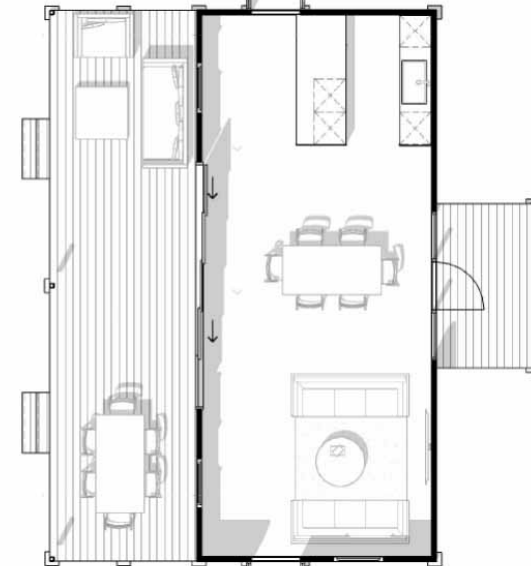
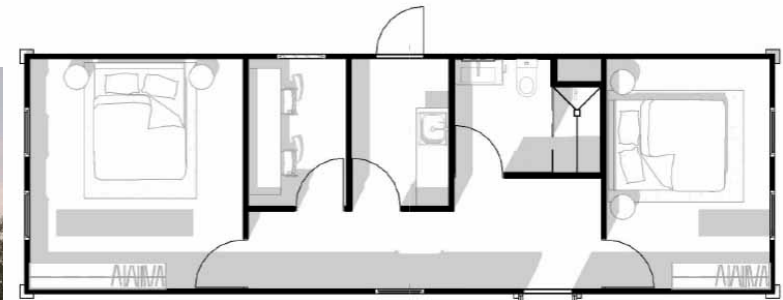
OVERALL WIDTH:	4.4m
OVERALL LENGTH:	13.4m
WALL HEIGHT:	2.4m
OVERALL HEIGHT:	3.5m
FLOOR SIZE:	57m ²





MODULAR LINKED VARIATIONS

Clients can link multiple units together in floor plans by connecting them with link components, creating a seamless flow between spaces as shown in the following examples.

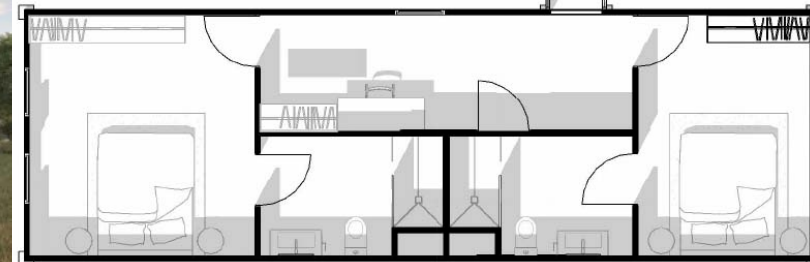
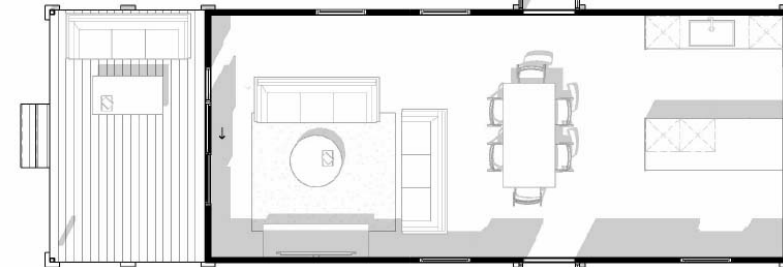
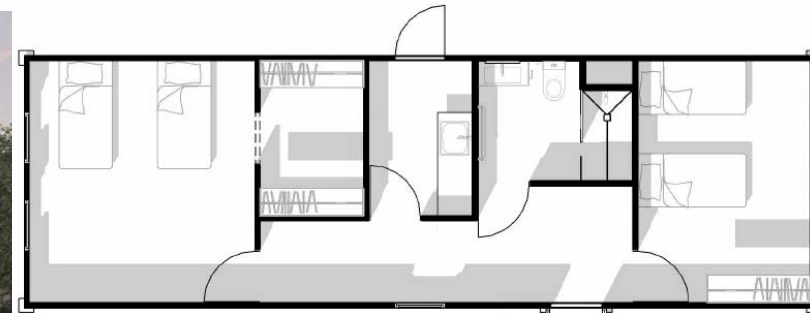


MODULAR 4 BED HOME

Horizontal

*Subject to site specific engineering and BAL/Wind requirements.

OVERALL WIDTH:	14.2m
OVERALL LENGTH:	21.2m
WALL HEIGHT:	2.4m
OVERALL HEIGHT:	3.5m
FLOOR SIZE:	183m ²



MODULAR 4 BED HOME

Vertical

*Subject to site specific engineering and BAL/Wind requirements.

OVERALL WIDTH:	14.2m
OVERALL LENGTH:	16m
WALL HEIGHT:	2.4m
OVERALL HEIGHT:	3.5m
FLOOR SIZE:	174m ²

INCLUSIONS

*Subject to site specific engineering and BAL/Wind requirements.

A standard WABi Kit includes all the materials required to build the shell of a home. All structural elements, walls, roofing, external cladding, deck, doors and glazing. It does not include labour.

UPGRADES:

Cyclonic Upgrade- Quote

Marine Upgrade- Quote

BAL Upgrade- Quote

Snow Upgrade- Quote

FOUNDATIONS:

Eco Anchor- WABi's recommended footing option, to reduce the cost of traditional footings. Not included in the kit price, until a sales agent has confirmed they are suitable for your site.

Concrete Slab- Not included in the price, would require a quote from a local contractor. We recommend using Eco Anchors where rock isn't present.

EXCLUSIONS:

Labour, Electrical Components, Plumbing Components, Paint, Internal Wall Feature Cladding, Kitchens, Bathrooms and Wardrobes (unless added in orders +5) as well as any additional items not listed in the "Inclusions".

SPECIFICATIONS TO CHOOSE:

- Roof Cladding Type & Colour- COLORBOND® Trimdek
- Wall Cladding Type & Colour- COLORBOND® Trimdek
- Composite Deck Colour
- Glazing Colour
- *Optional Vinyl Colour*

EXTERIOR- ROOF

Standard

- Structural steel frame
- Skillion 5 degree pitch w/ Exposed eaves
- COLORBOND® Trimdek roof cladding
 - with flashing as required
- Roofing blanket

INTERIOR- WALLS

Standard

- 2400H WABi wall panels (*client to batten, flush, paint or internally clad*)
- 10mm plasterboard ceiling (*client to batten, flush or paint*)
- Ceiling insulation
- Square timber cornice mold
- Square timber skirting mold
- CFC Cement Sheet Flooring

Add Ons

- Luxury Vinyl Plank Flooring
- Bespoke Internal Wall Cladding

COMPOSITE DECKING

Add Ons

- Composite Decking
- Structural Steel Frame
- Balustrade

EXTERIOR- WALLS

Standard

- Structural steel frame
- 2400H WABi wall panels
- COLORBOND® Trimdek wall cladding

GLAZING

Standard

- Powder Coated Aluminum
- Fly Screen
- Standard Handles
- Key Lock

Add Ons

- Double Glazing
- Low E Glazing
- Security Mesh
- BAL Upgrade Screens

BATHKIT

- Vinyl flooring
- Full height cladded shower walls
- Shower base
- Fixed Shower glass
- Wall faced toilet
- 750 Wide Free standing Vanity with Open Shelf and 2 Soft Close Drawers
- Chrome, matte or brushed nickel tapware and shower system
- Hanging round wall mirror
- Chrome, matte or brushed nickel double towel rail and toilet roll holder

BATHKIT

A standard WABi Bathkit includes all the materials required to build the shell of a bathroom. All aesthetic elements as listed below. It does not include hot and cold water, plumbing, pipes, electrical, labour etc.

BATHKIT

Inclusions

- Vinyl flooring
- Full height cladded shower walls
- Shower base
- Fixed Shower glass
- Wall faced toilet
- 750 Wide Free standing Vanity with Open Shelf and 2 Soft Close Drawers
- Chrome, matte or brushed nickel tapware and shower system
- Hanging wall mirror
- Chrome, matte or brushed nickel double towel rail and toilet roll holder

We are unable to change BathKit fixtures, fittings & materials

Exclusions

- Hot and cold water drainage
- Pipes
- Installation
- Plumbing Connection
- Electrical Connection
- GPO's
- Socket Outlets
- Wirings
- Power switches
- Light switches
- Downlights
- Extraction Fan



SUM OF PARTS

Flat pack permanent construction

Using prefabricated components that are manufactured and transported separately and **built together on site;** using our customised installation assembly drawings.



C BRACKET*



L BRACKET*



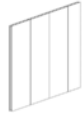
JOIST BRACKET*



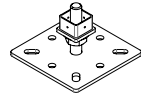
ECO ANCHOR BRACKET*



ECO ANCHOR*



WABi PANEL*



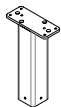
BASE PLATE*



C & Z PURLINS



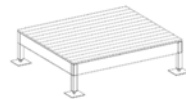
BATHPOD/
BATHKIT



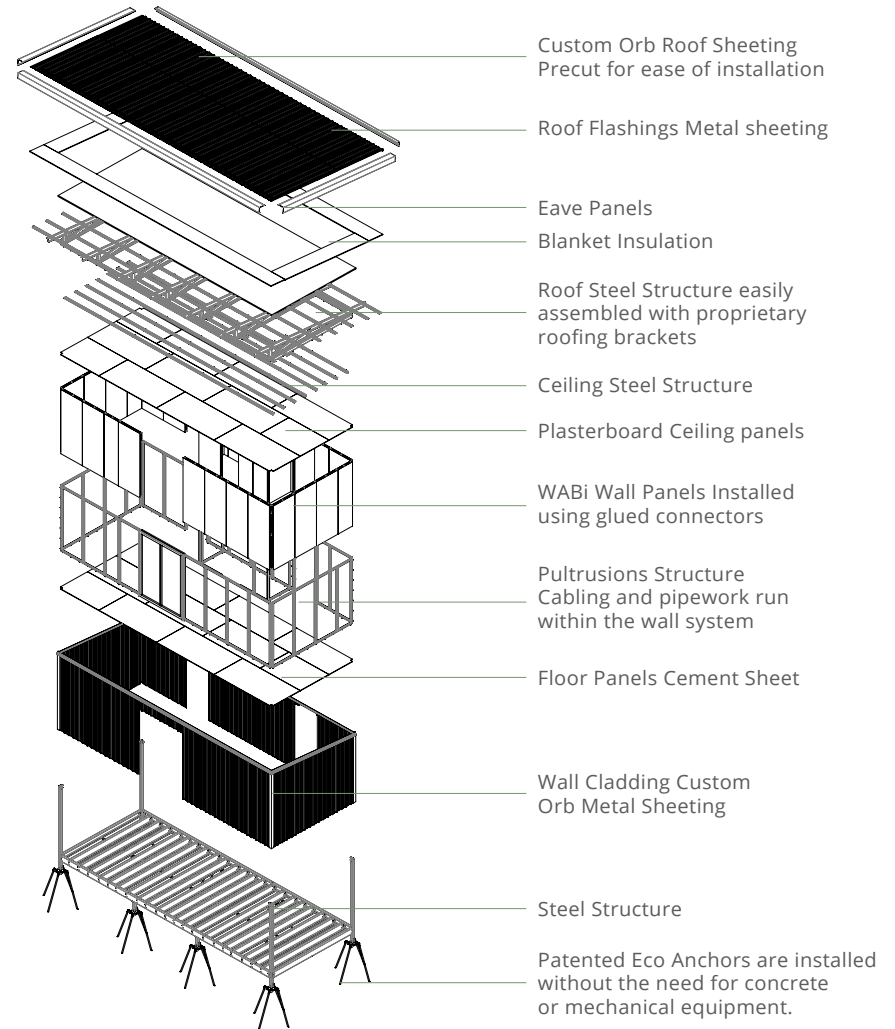
STUMP



DOORS &
WINDOWS



1.8m or 2.7m
DECK



*Patented System

**Example project not specific to project.

TYPICAL PROCESS

To help realise the vision of the project, we have created a timeline to guide you through the process. The following table is indicative and time variations may occur outside of WABi Systems control.

1	Identify Full Project Scope You are here! From this document chose a plan and get in touch with our sales team!	6	120 days in Manufacturing 40% Progress Payment
2	Initial Quote Developed & Supplied To ensure you have a good understanding of the process, inclusions, time frame & budget	7	4-6 Weeks Shipping to Site Manufacturing Completed 40% Progress Payment *Dependant on location
3	Planning & Building Approvals Engage an architect or use our internal architects	8	Pre Construction Meeting Our internal team will meet with you and your preferred builder to have a preconstruction handover meeting
4	Formal Quote Developed & Supplied Sign the manufacturing supply contract Engage a local builder	9	Arrival to Nearest Port Final 10% Payment Your project is almost at your site! Payment due when goods arrive at nearest port to site.
5	Specifications & Drawings Signed 10% Deposit to Start	10	Materials Land on Site Provided you have all the correct approvals you are now ready to build!

W A B i

SIMPLER. SMARTER. STRONGER

(08) 9193 8007 | sales@wabisystems.com.au
wabisystems.com.au

A company of The WABi Group

