



WABI

SIMPLER. SMARTER. STRONGER

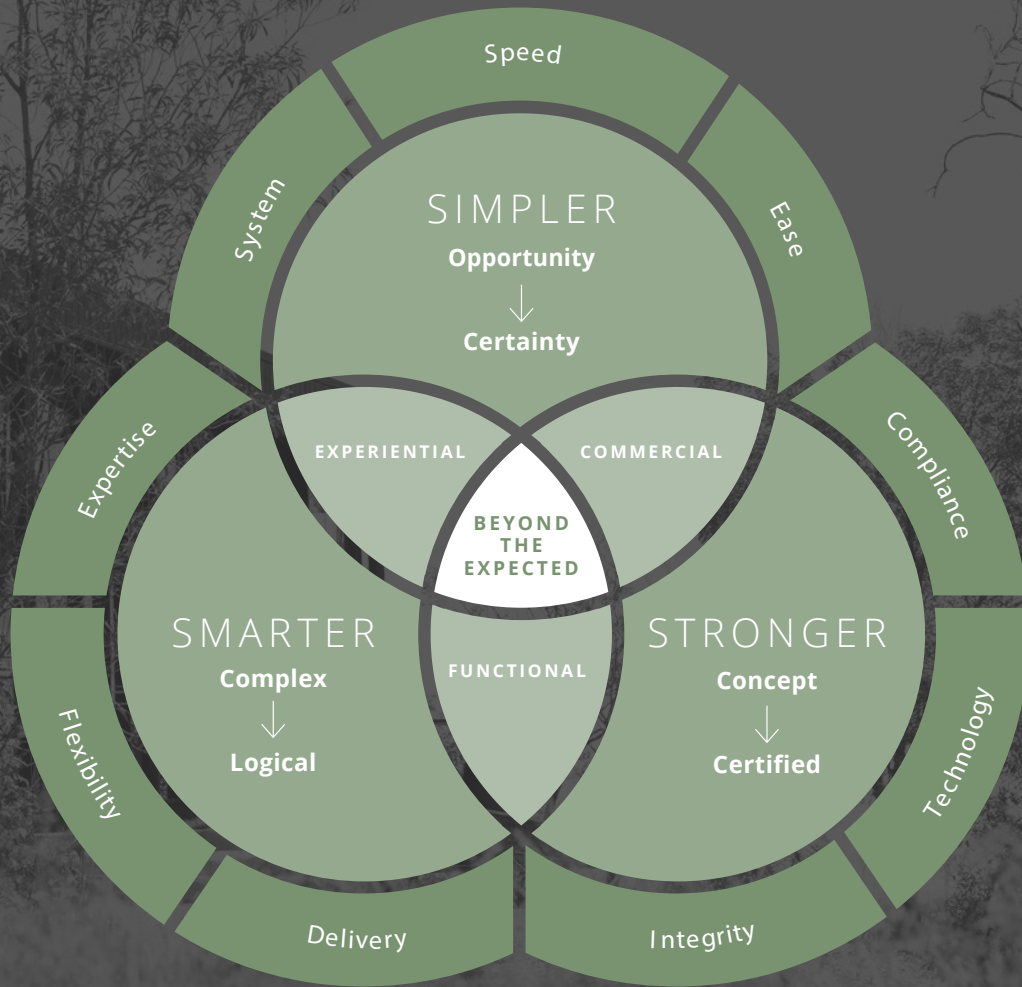
Australian Owned

120 Day Fast Delivery

Up to x3 Faster than traditional construction

**TOURISM
BROCHURE**

wabisystems.com.au



WABi Systems' foundation is based on finding a **simpler**, **stronger**, and **smarter** method to the typical construction approach. It incorporates several key values; to retain the local site ecology, achieve high thermal resistance, stimulate local jobs, and be effortlessly constructed with minimal tools and time.

Assembling a WABi is much like a building a flat-pack, every element has been meticulously engineered to work in unison, from our thermally insulated panels, eco anchors footings, doors and windows.

Local community members can piece structure(s) together at remarkable speed using our customised installation assembly drawings and our teams' assistance.

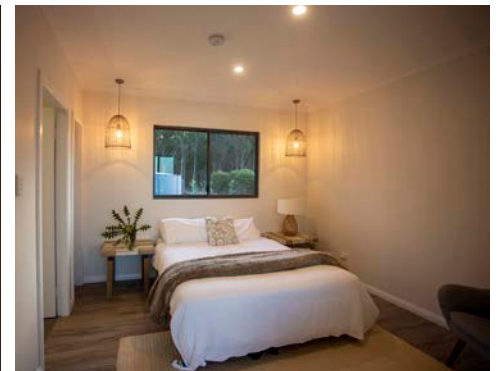
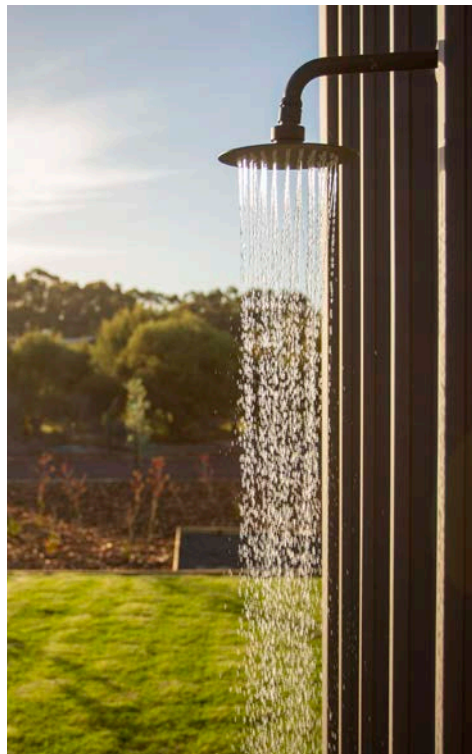
With efficient designs, patented systems and construction techniques the WABi System is an emerging, global leader in sustainability and eco-friendly housing.

PAST PROJECT- ZAMBEZI LODGE

Location: Margaret River, WA

Sitting in the heart of the Margaret River wine region the Zambezi Lodge reflects excellence in sustainability and smart build principles. The lodge was originally designed as an Eco Tent and later upgraded to the WABi Tourism System prototype for a project on the Zambezi River in Africa, reflecting safari-style spacious living. Perched above a private rocky outcrop, with its own 'watering hole' lake and sweeping sunset views, Zambezi Lodge captures the essence of the south-west, in an inspired safari-style setting.

We always like to challenge and prove our new design concepts, before sharing them with the world – and hope you enjoy the new adventure of Zambezi Lodge and our adjacent WABi Tourism System, next door.



PAST PROJECT- WANDER CABINS

Location: QLD

Providing short-stay accommodation in some of Australia's most spectacular locations, Wander has a variety of retreats with a focus on eco-living. In one of their latest projects, they collaborated with our team on some luxurious module designs. Each WABi Tourism System had luxury in mind, with floor-to-ceiling windows to allow the guests to truly immerse themselves in nature.





The WABi Tourism System is made specifically for the Tourism market as a high-quality, purpose-led accommodation option, providing a modern and sustainable alternative to conventional accommodation. It is designed to assist tourism owners and developers to capitalise on a growing market for experiential travel.

Strong enough to withstand the elements, each WABi Tourism System is created as a high-standard, permanent structure. WABi Tourism System is deliberately designed to assist resort owners, Airbnb enthusiasts and developers to capitalise on the rapidly growing demand for unique, experiential travel.

Our philosophy is ingrained with Scandinavian and Japanese minimalist principles permitting simplicity, connection, comfort, and wellbeing led design. The designs offer deck space for outdoor living and employ full height windows and long sight lines to create a sense of openness. These designs are compact and low maintenance making them extremely profitable as a one-of-a-kind tourism experience.

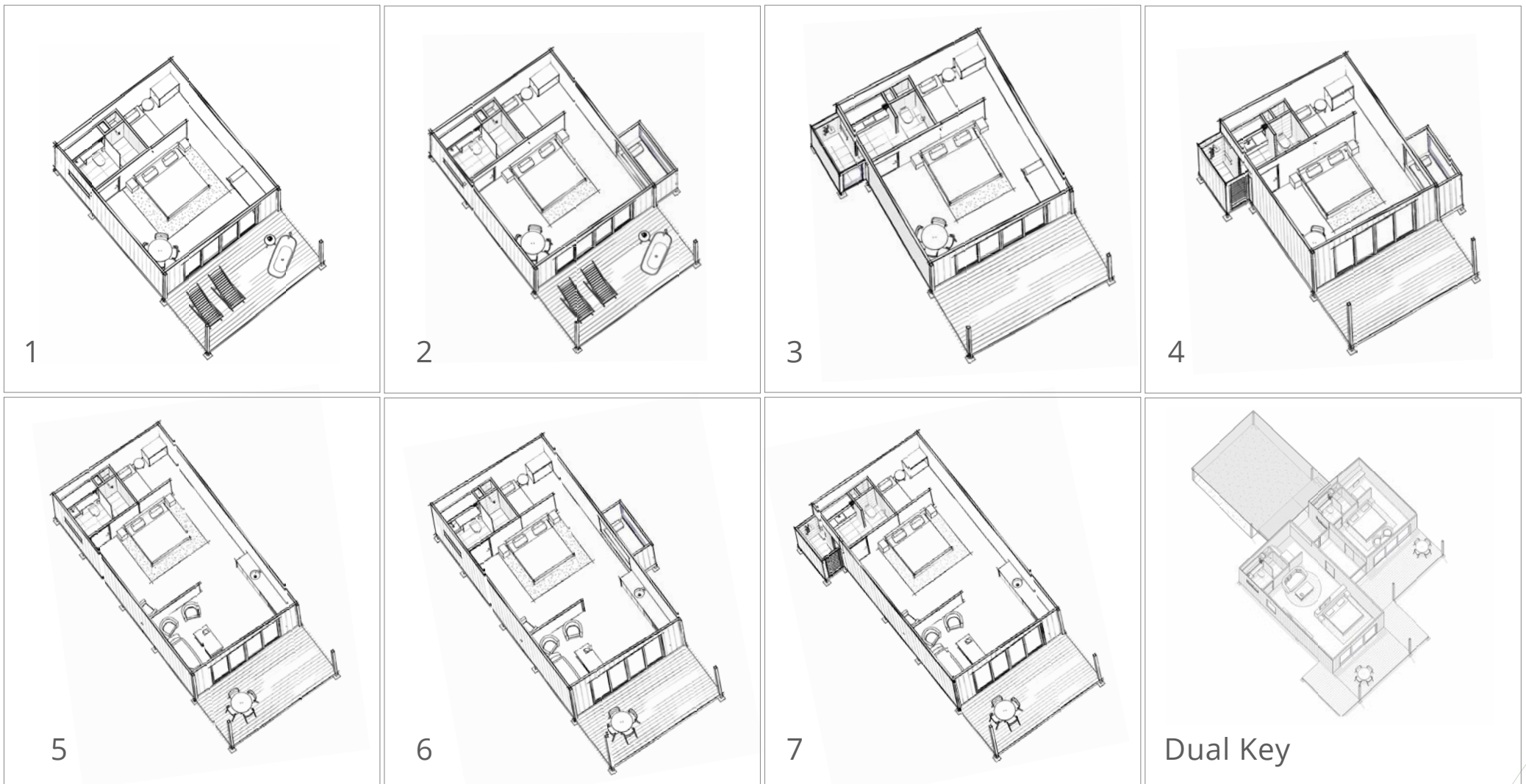


TOT

Tourism of Tomorrow

*Subject to site specific engineering and BAL/Wind requirements.
 * Includes Deck
 *Standard Offering- Luxury offering includes additional glazing, different roof types and 2.7m high wall panels
 *Images are for illustrative purposes only.
 *Please refer to inclusions list for more details.

| | |
|-----------------|------------------|
| OVERALL WIDTH: | 5.6m |
| OVERALL LENGTH: | 6.4m or 10.1m |
| WALL HEIGHT: | 2.7m |
| INTERNAL SIZE: | 58m ² |
| TOTAL SIZE: | 71m ² |

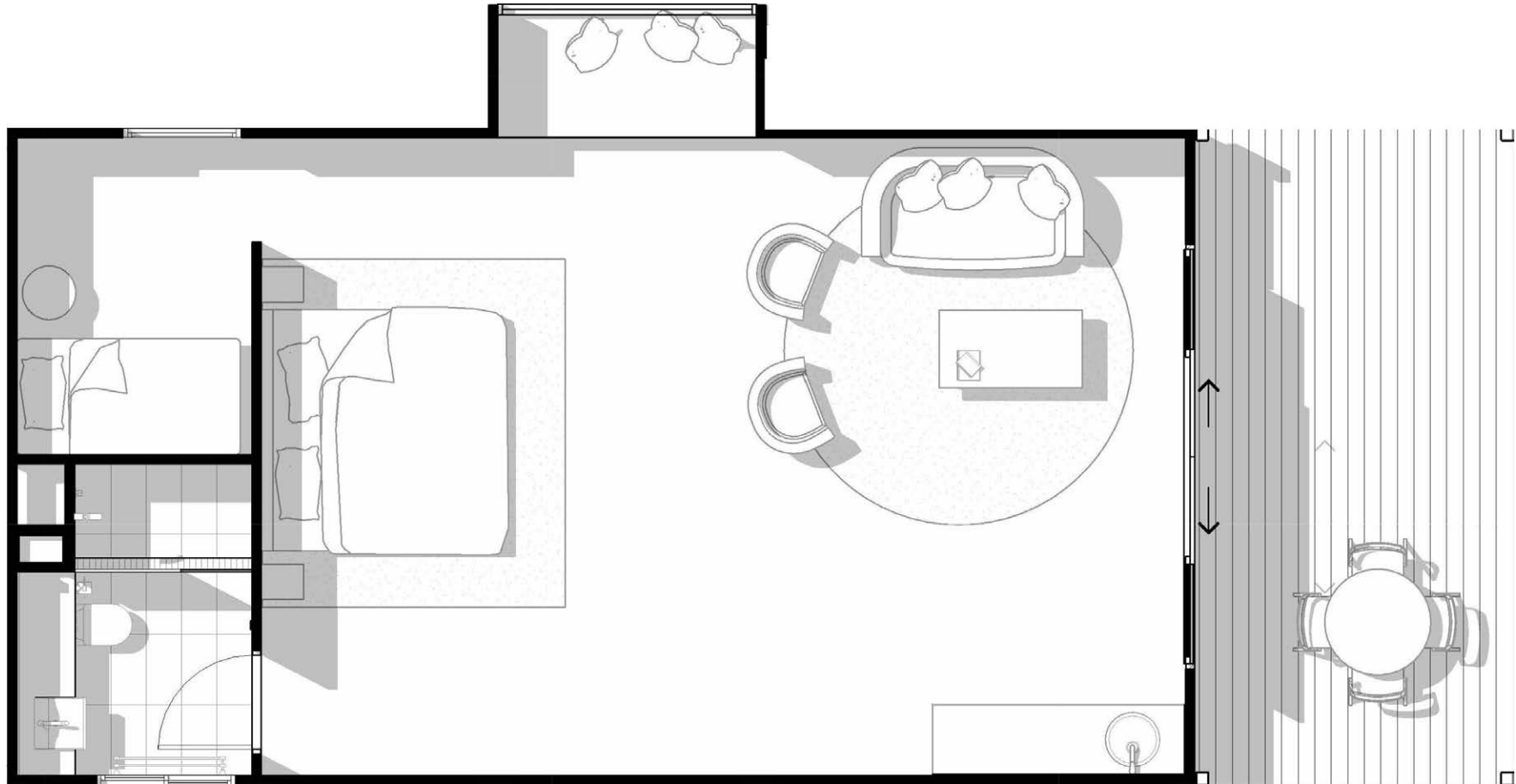


TOT

Tourism of Tomorrow

*Subject to site specific engineering and BAL/Wind requirements.
 *Includes Deck
 *Standard Offering- Luxury offering includes additional glazing,
 different roof types and 2.7m high wall panels
 *Images are for illustrative purposes only.
 *Please refer to inclusions list for more details.

| | |
|-----------------|------------------|
| OVERALL WIDTH: | 5.6m |
| OVERALL LENGTH: | 6.4m or 10.1m |
| WALL HEIGHT: | 2.7m |
| INTERNAL SIZE: | 58m ² |
| TOTAL SIZE: | 71m ² |

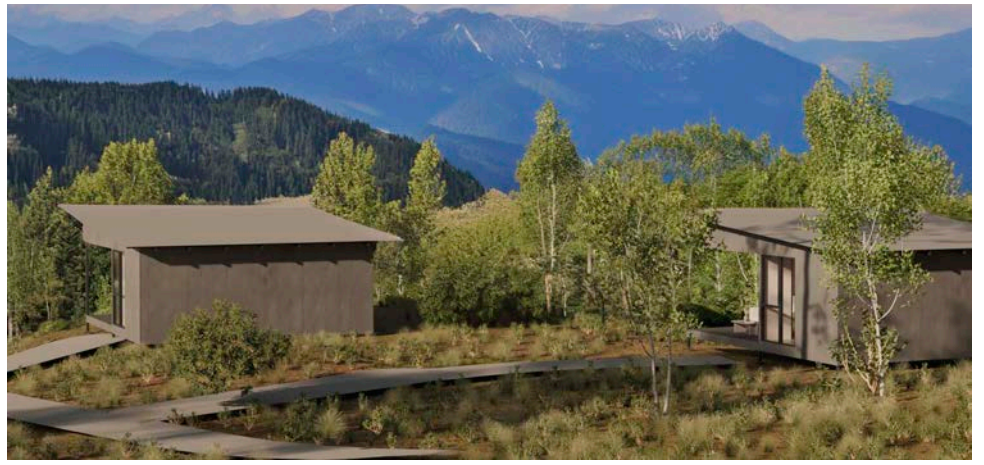
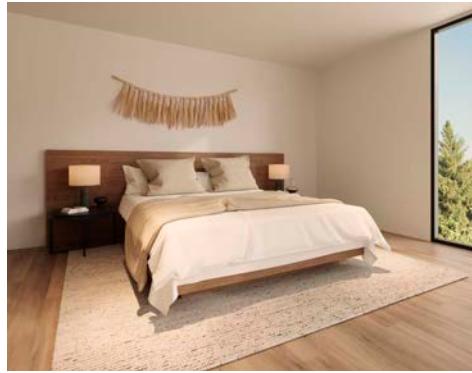


TOT- OPTION 6

Tourism of Tomorrow

- *Subject to site specific engineering and BAL/Wind requirements.
- * Includes Deck
- *Standard Offering- Luxury offering includes additional glazing, different roof types and 2.7m high wall panels
- *Images are for illustrative purposes only.
- *Please refer to inclusions list for more details.

| | |
|-----------------|------------------|
| OVERALL WIDTH: | 5.6m |
| OVERALL LENGTH: | 10.1m |
| WALL HEIGHT: | 2.7m |
| INTERNAL SIZE: | 58m ² |
| TOTAL SIZE: | 71m ² |

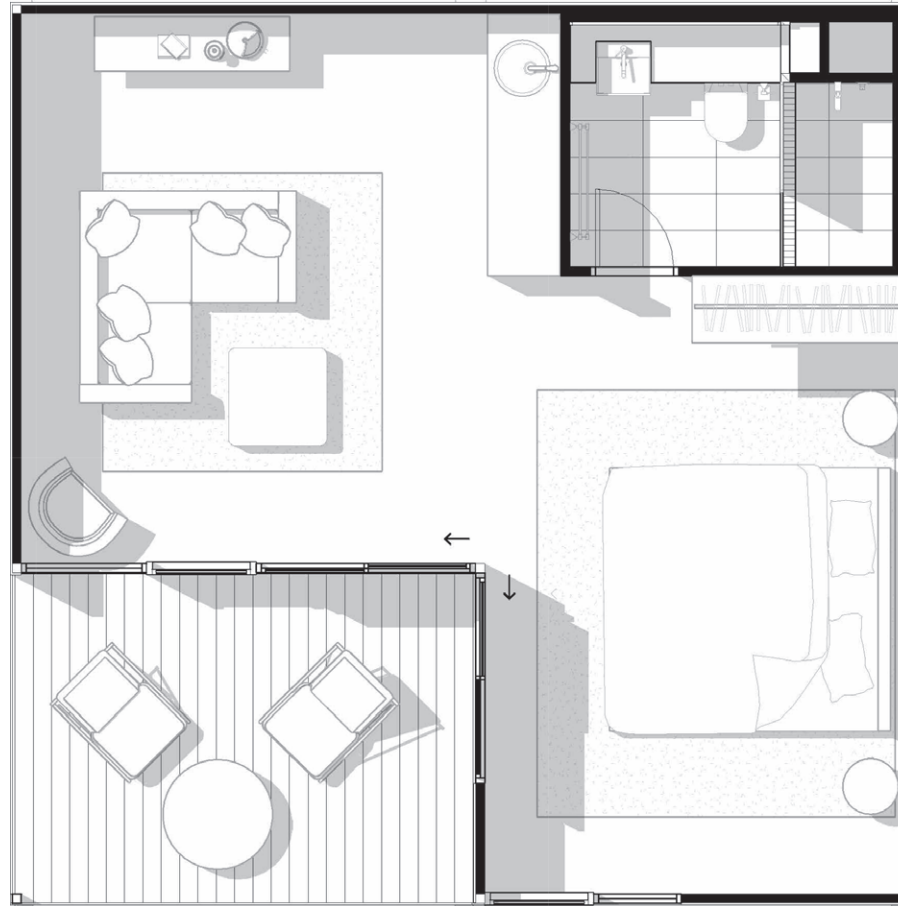


BANKSIA 1 BED

MOQ 5 with BathPod

- *Subject to site specific engineering and BAL/Wind requirements.
- * Includes Deck
- *Standard Offering- Luxury offering includes additional glazing, different roof types and 2.7m high wall panels
- *Images are for illustrative purposes only.
- *Please refer to inclusions list for more details.

| | |
|-----------------|------------------|
| OVERALL WIDTH: | 7.4m |
| OVERALL LENGTH: | 7.4m |
| WALL HEIGHT: | 2.4m or 2.7m |
| INTERNAL SIZE: | 42m ² |
| TOTAL SIZE: | 52m ² |



BANKSIA 1 BED

MOQ 5 with BathPod

- *Subject to site specific engineering and BAL/Wind requirements.
- * Includes Deck
- *Standard Offering- Luxury offering includes additional glazing, different roof types and 2.7m high wall panels
- *Images are for illustrative purposes only.
- *Please refer to inclusions list for more details.

| | |
|-----------------|------------------|
| OVERALL WIDTH: | 7.4m |
| OVERALL LENGTH: | 7.4m |
| WALL HEIGHT: | 2.4m or 2.7m |
| INTERNAL SIZE: | 42m ² |
| TOTAL SIZE: | 52m ² |



BANKSIA 2 BED

MOQ 5 with BathPod

- *Subject to site specific engineering and BAL/Wind requirements.
- * Includes Deck
- *Standard Offering- Luxury offering includes additional glazing, different roof types and 2.7m high wall panels
- *Images are for illustrative purposes only.
- *Please refer to inclusions list for more details.

| | |
|-----------------|------------------|
| OVERALL WIDTH: | 7.4m |
| OVERALL LENGTH: | 10.9m |
| WALL HEIGHT: | 2.4m or 2.7m |
| INTERNAL SIZE: | 62m ² |
| TOTAL SIZE: | 81m ² |



BANKSIA 2 BED

MOQ 5 with BathPod

- *Subject to site specific engineering and BAL/Wind requirements.
- * Includes Deck
- *Standard Offering- Luxury offering includes additional glazing, different roof types and 2.7m high wall panels
- *Images are for illustrative purposes only.
- *Please refer to inclusions list for more details.

| | |
|-----------------|------------------|
| OVERALL WIDTH: | 7.4m |
| OVERALL LENGTH: | 10.9m |
| WALL HEIGHT: | 2.4m or 2.7m |
| INTERNAL SIZE: | 62m ² |
| TOTAL SIZE: | 81m ² |



FINGERLIME

MOQ 5 with BathPod

*Subject to site specific engineering and BAL/Wind requirements.
* Includes Deck
*Standard Offering- Luxury offering includes additional glazing, different roof types and 2.7m high wall panels
*Images are for illustrative purposes only.
*Please refer to inclusions list for more details.

| | |
|-----------------|------------------|
| OVERALL WIDTH: | 14.4m |
| OVERALL LENGTH: | 3.8m |
| WALL HEIGHT: | 2.4m or 2.7m |
| INTERNAL SIZE: | 44m ² |
| TOTAL SIZE: | 54m ² |



FINGERLIME

MOQ 5 with BathPod

- *Subject to site specific engineering and BAL/Wind requirements.
- * Includes Deck
- *Standard Offering- Luxury offering includes additional glazing, different roof types and 2.7m high wall panels
- *Images are for illustrative purposes only.
- *Please refer to inclusions list for more details.

| | |
|-----------------|------------------|
| OVERALL WIDTH: | 14.4m |
| OVERALL LENGTH: | 3.8m |
| WALL HEIGHT: | 2.4m or 2.7m |
| INTERNAL SIZE: | 44m ² |
| TOTAL SIZE: | 54m ² |

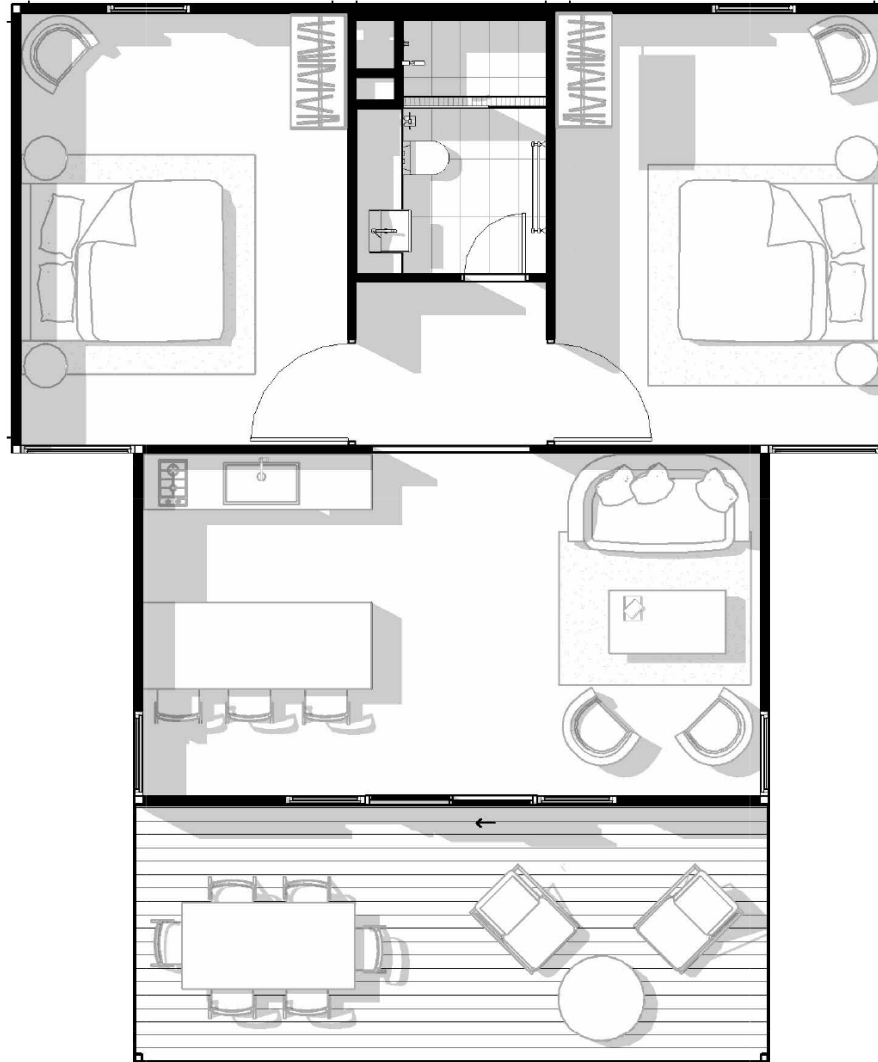


GREVILLEA

MOQ 5 with BathPod

- *Subject to site specific engineering and BAL/Wind requirements.
- * Includes Deck
- *Standard Offering- Luxury offering includes additional glazing, different roof types and 2.7m high wall panels
- *Images are for illustrative purposes only.
- *Please refer to inclusions list for more details.

| | |
|-----------------|------------------|
| OVERALL WIDTH: | 9.1m |
| OVERALL LENGTH: | 11m |
| WALL HEIGHT: | 2.4m or 2.7m |
| INTERNAL SIZE: | 67m ² |
| TOTAL SIZE: | 85m ² |



GREVILLEA

MOQ 5 with BathPod

- *Subject to site specific engineering and BAL/Wind requirements.
- * Includes Deck
- *Standard Offering- Luxury offering includes additional glazing, different roof types and 2.7m high wall panels
- *Images are for illustrative purposes only.
- *Please refer to inclusions list for more details.

| | |
|-----------------|------------------|
| OVERALL WIDTH: | 9.1m |
| OVERALL LENGTH: | 11m |
| WALL HEIGHT: | 2.4m or 2.7m |
| INTERNAL SIZE: | 67m ² |
| TOTAL SIZE: | 85m ² |



WATTLE 1 BED

MOQ 5 with BathPod

*Subject to site specific engineering and BAL/Wind requirements.
 * Includes Deck
 *Standard Offering- Luxury offering includes additional glazing, different roof types and 2.7m high wall panels
 *Images are for illustrative purposes only.
 *Please refer to inclusions list for more details.

| | |
|-----------------|------------------|
| OVERALL WIDTH: | 8.3m |
| OVERALL LENGTH: | 10m |
| WALL HEIGHT: | 2.4m or 2.7m |
| INTERNAL SIZE: | 61m ² |
| TOTAL SIZE: | 73m ² |



WATTLE 1 BED

MOQ 5 with BathPod

- *Subject to site specific engineering and BAL/Wind requirements.
- * Includes Deck
- *Standard Offering- Luxury offering includes additional glazing, different roof types and 2.7m high wall panels
- *Images are for illustrative purposes only.
- *Please refer to inclusions list for more details.

| | |
|-----------------|------------------|
| OVERALL WIDTH: | 8.3m |
| OVERALL LENGTH: | 10m |
| WALL HEIGHT: | 2.4m or 2.7m |
| INTERNAL SIZE: | 61m ² |
| TOTAL SIZE: | 73m ² |

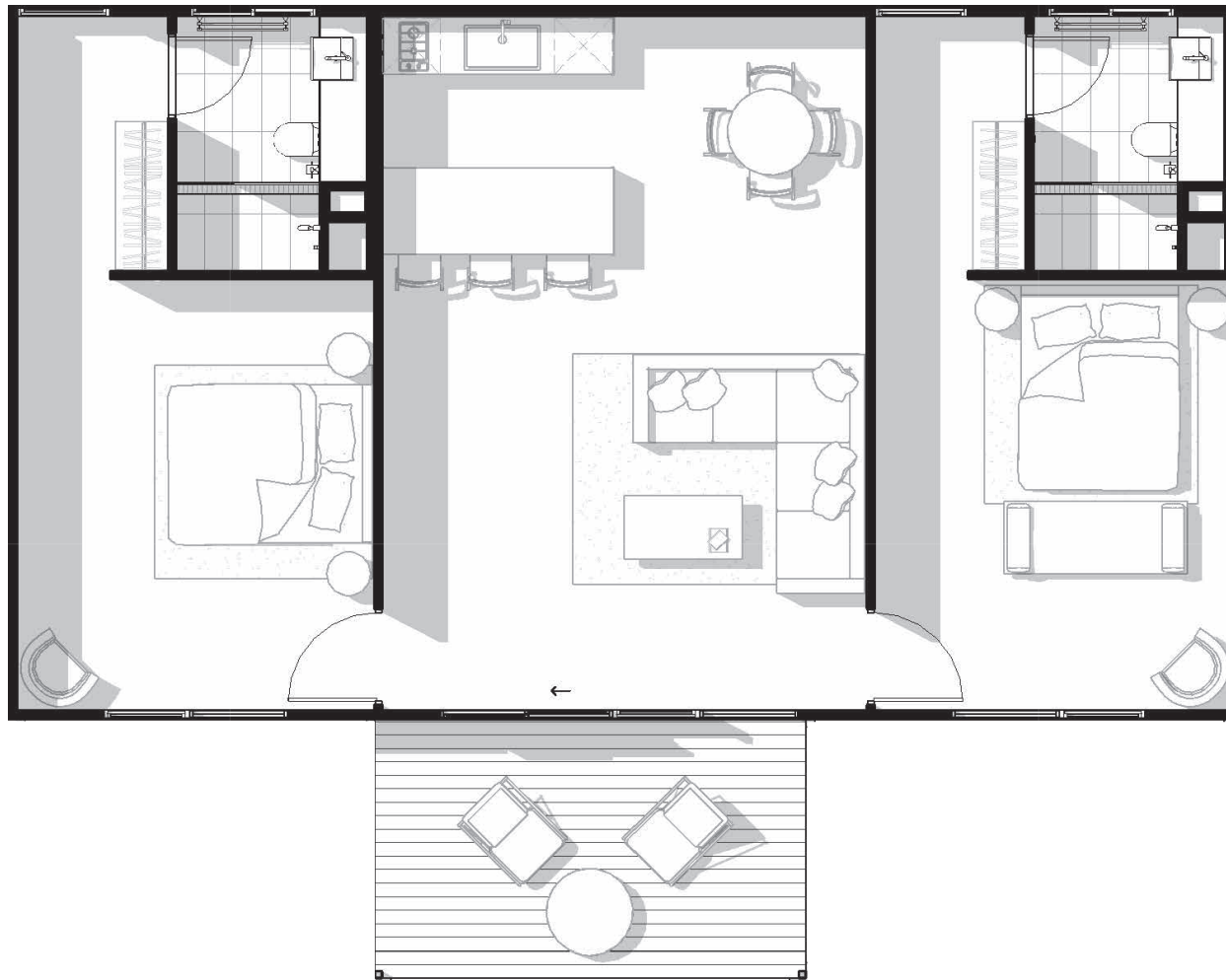


WATTLE 2 BED

MOQ 5 with BathPod

- *Subject to site specific engineering and BAL/Wind requirements.
- * Includes Deck
- *Standard Offering- Luxury offering includes additional glazing, different roof types and 2.7m high wall panels
- *Images are for illustrative purposes only.
- *Please refer to inclusions list for more details.

| | |
|-----------------|-------------------|
| OVERALL WIDTH: | 12.7m |
| OVERALL LENGTH: | 10m |
| WALL HEIGHT: | 2.4m or 2.7m |
| INTERNAL SIZE: | 94m ² |
| TOTAL SIZE: | 106m ² |



WATTLE 2 BED

MOQ 5 with BathPod

*Subject to site specific engineering and BAL/Wind requirements.
 * Includes Deck
 *Standard Offering- Luxury offering includes additional glazing,
 different roof types and 2.7m high wall panels
 *Images are for illustrative purposes only.
 *Please refer to inclusions list for more details.

| | |
|-----------------|-------------------|
| OVERALL WIDTH: | 12.7m |
| OVERALL LENGTH: | 10m |
| WALL HEIGHT: | 2.4m or 2.7m |
| INTERNAL SIZE: | 94m ² |
| TOTAL SIZE: | 106m ² |

INCLUSIONS:

*Subject to site specific engineering and BAL/Wind requirements.

A standard WABi Kit includes all the materials required to build the shell of a home. All structural elements, walls, roofing, external cladding, deck, doors and glazing. It does not include labour.

UPGRADES:

Cyclonic Upgrade- 7% Added to Standard kit price

Marine Upgrade- 5% Added to Standard kit price

BAL Upgrade- Quote

Snow Upgrade- Quote

FOUNDATIONS:

Eco Anchor- WABi's recommended footing option, to reduce the cost of traditional footings. Not included in the kit price, until a sales agent has confirmed they are suitable for your site.

Concrete Slab- Not included in the price, would require a quote from a local contractor. We recommend using Eco Anchors where rock isn't present.

EXCLUSIONS:

Labour, Electrical Components, Plumbing Components, Paint, Internal Wall Feature Cladding, Kitchens, Bathrooms and Wardrobes (unless added in orders +5) as well as any additional items not listed in the "Inclusions".

SPECIFICATIONS TO CHOOSE:

- Roof Cladding Type & Colour- COLORBOND® Trimdek
- Wall Cladding Type & Colour- COLORBOND® Trimdek
- Composite Deck Colour
- Glazing Colour
- *Optional* Vinyl Colour- MiPlank

WABI KIT:

EXTERIOR- ROOF

Standard

- Structural steel frame
- Skillion 5 degree pitch w/ Exposed eaves
- COLORBOND® Trimdek roof cladding with flashing as required
- Roofing blanket

EXTERIOR- WALLS

Standard

- Structural steel frame
- 2400H WABi wall panels
- COLORBOND® Trimdek wall cladding

INTERIOR- WALLS

Standard

- 2400H WABi wall panels (*client to batten, flush, paint or internally clad*)
- 10mm plasterboard ceiling (*client to batten, flush or paint*)
- Ceiling insulation
- Square timber cornice mold
- Square timber skirting mold

COMPOSITE DECKING

Standard

- Structural Steel Frame
- Composite Decking

Add Ons

- Balustrade
- Stairs

GLAZING

Standard

- Powder Coated Aluminum
- Fly Screen
- Standard Handles
- Key Lock

Add Ons

- Double Glazing
- Low E Glazing
- Security Mesh
- BAL Upgrade Screens

BATHPOD (MOQ+5)

- Tiles available in Light, Mid and Dark colour tones.
- Tiled floors and tile walls
- Full height tiled shower walls
- Linear floor grate
- Concealed cistern with back to wall toilet pan
- Vanity unit with ceramic basins
- Acrylic bench top (Silica Free)
- Chrome, matte or brushed nickel tap ware and shower system
- Fixed wall mirror
- Chrome, matte or brushed nickel double towel rails and toilet roll holder
- Electrical lighting, GPO's and plumbing to be fixed to mains on site

BATHKIT

- Vinyl flooring
- Full height cladded shower walls
- Shower base
- Fixed Shower glass
- Wall faced toilet
- 750 Wide Free standing Vanity with Open Shelf and 2 Soft Close Drawers
- Chrome, matte or brushed nickel tapware and shower system
- Hanging round wall mirror
- Chrome, matte or brushed nickel double towel rail and toilet roll holder

SUM OF PARTS

Flat pack permanent construction

We like to think of our system like a flat pack. Using prefabricated components that are manufactured and transported separately and **built together on site**; using our customised installation assembly drawings.



C BRACKET*



L BRACKET*



JOIST BRACKET*



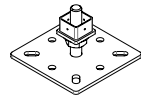
ECO ANCHOR BRACKET*



ECO ANCHOR*



WABi PANEL*



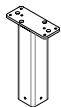
BASE PLATE*



C & Z PURLINS



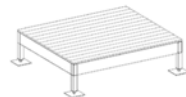
BATHPOD/
BATHKIT



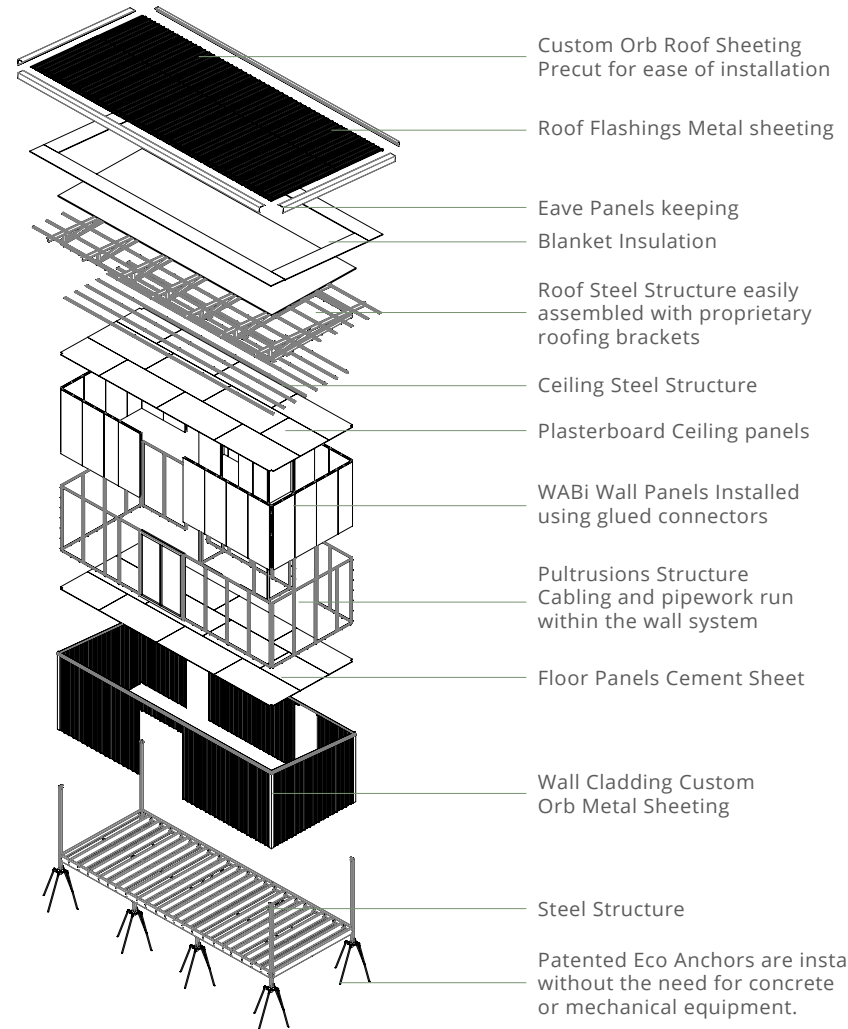
STUMP



DOORS &
WINDOWS



1.8m or 2.7m
DECK



*Patented System

**Example project not specific to project.

TYPICAL PROCESS

To help realize the vision of the project, we have created a timeline to guide you through the process. The following table is indicative and time variations may occur outside of WABi Systems control.

| | | | |
|----------|--|-----------|---|
| 1 | Identify full project scope You are here! From this document chose a plan and get in touch with our sales team! | 6 | 40% Progress Payment 120 days in Manufacturing |
| 2 | Initial quote developed & supplied To ensure you have a good understanding of the process, inclusions, time frame & budget | 7 | 40% Progress Payment Manufacturing Completed 4-6 weeks shipping to site** Dependant on location |
| 3 | Engage an architect or use our internal architects Go through the process of DA Planning and Building Approvals | 8 | Pre Construction Meeting Our internal team will meet with you and your preferred builder to have a preconstruction handover meeting |
| 4 | Formal quote developed & supplied Sign the manufacturing supply contract Engage a local builder | 9 | 10% Final Payment Your project is almost at your site! Payment due when goods arrive at nearest port to site. |
| 5 | 10% Deposit Final Specifications and drawings signed | 10 | Materials Land on Site Provided you have all the correct approvals you are now ready to build! |

W A B i

SIMPLER. SMARTER. STRONGER

(08) 9193 8000 | sales@wabisystems.com.au

wabisystems.com.au

A company of The WABi Group

